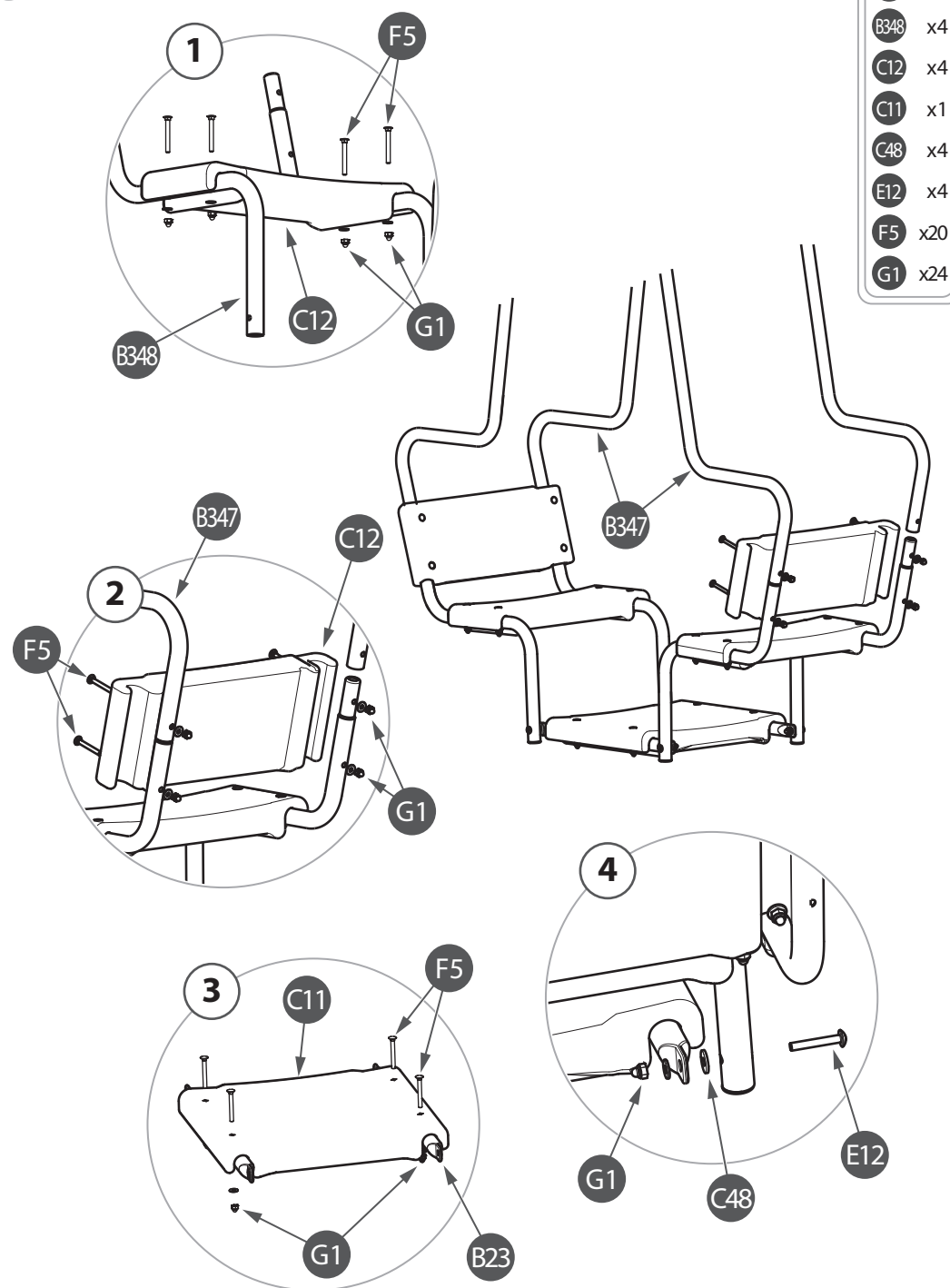




5

**[GB] ASSEMBLY INSTRUCTIONS**

Warning! For private use only at home.

Madam, Sir,

This product has been designed and manufactured following requirements of 2009/48/EC European directive relating to safety of toys. Compliance to these requirements has been checked by an independent laboratory, following safety of toys standard EN71 part 1, 2, 3, and 8, and 1907/2006/CE regulation (REACH). All informations included in this instruction sheet are required by these regulations. You must follow these to enable your children to use this product safely.

Assembly instructions

This product has to be assembled by yourself. You must keep this instruction sheet for further use, most particularly for:

- Maintenance operations.

- Parts identification by our after sales service.

Packaging bags and boxes are not intended to be used as toys, do not let children play with them.

Do not throw packaging bags and boxes in nature. Follow recycling instructions.

Warning!

- Assembly must be done by an adult.

- Keep away children during assembly: choking hazard with small parts.

- Every defective apparatus and/or part shall be only replaced by an apparatus/part supplied by our after sales service or by an approved retailer.

- Disregarding instructions detailed in this instruction sheet will involve dangerous use of the product, with fall and/or shock hazard.

Before assembly, ensure that:

1- The place where you build the product is:

- Plane and horizontal.

- Minimum 2 meters away from any object, structure or other obstacle (hedge, tree, clothesline, electrical line...) that could hurt product user.

- Not on a hard floor (concrete, asphalt...). Select grass or other kind of soft floor (sand, shock absorbing materials...).

2- Fastening is complete. You could have unused parts at the end of the assembly, keep them for further use (spare parts).

When the product is equipped with a slide, we advise you to set it not directly facing the sun.

After assembly:

- Fix the product on concrete anchors, realized by following instructions detailed on this instruction sheet.

NB: concrete blocks must be fully dry before fixing the product on them. Only metal stake shall be drowned into concrete.

Not any part of the product shall be drowned into concrete.

- When needed, adjust apparatus setting (see figure Y).

- Check distance between apparatus bottom surface and the ground. Distances must be respected to enable a safe use of the product.

If they are below the specifications indicated in figure W use the plastic rings to adjust the height of the seat. If this is not possible, please contact our after sales service.

GROUND ANCHORING (see figure Z)

1- Build the product, and set it on the selected place.

2- Mark anchors position.

3- Check on your product dimensions indicated in figure W, adjust them if necessary.

4- Under each anchor position, mark a 35cm x 35cm square, and dig it to 35cm depth.

5- Fill these holes with concrete following figure Z.

Dome extremity shall not exceed floor level, to prevent from stumbling.

6- Put anchor on concrete on the marked position (see point 2). Warning: only the drilled side of the anchor shall be over the concrete.

7- Once concrete is dry, screw legs of the product on anchors.

8- Wait for complete drying of concrete before using the product.

9- Cover with ground each anchor, to prevent from stumbling.

Safety and use instructions

Warning! This product is intended:

- For domestic use outside. It is not intended to be used in collective private use (hotel, resting place, camping, barracks, public building...), in collective public use (school playground, public garden).

- To children from 3 to 12 years old, maximum weight 50kg. Maximum weight is reduced to 35kg per sitting place for double sit apparatus (see saw & double swing).

If the product is equipped with a baby seat, it is only intended for children from 6 to 24 months, maximum weight 15kg.

- Keep away from fire.

This toy must be used under adult supervision, who must make sure that:

- Children using the toy are old enough and have skills to use it.

- There is only one child per seat.

- There are no children in the swinging area of apparatus: shock hazard. There are no children that have a wrong and/or dangerous use of the product: severe injury hazard.

Maintenance instructions

To avoid any danger by using the product, several points must be checked every month:

- Suspension hooks and hinge. Change them if wear is 10 % more than original thickness.

- Structure and apparatus screws and nuts tightening: tighten again if necessary.

- Anchors resistance.

- Presence of nuts caps. Replace them by identical nuts cap if they are missing.

- Plastic part general condition. Replace them if they are cracked or drilled.

- Wear indicator: apparatus must be changed when metal part is visible on the plastic ring.

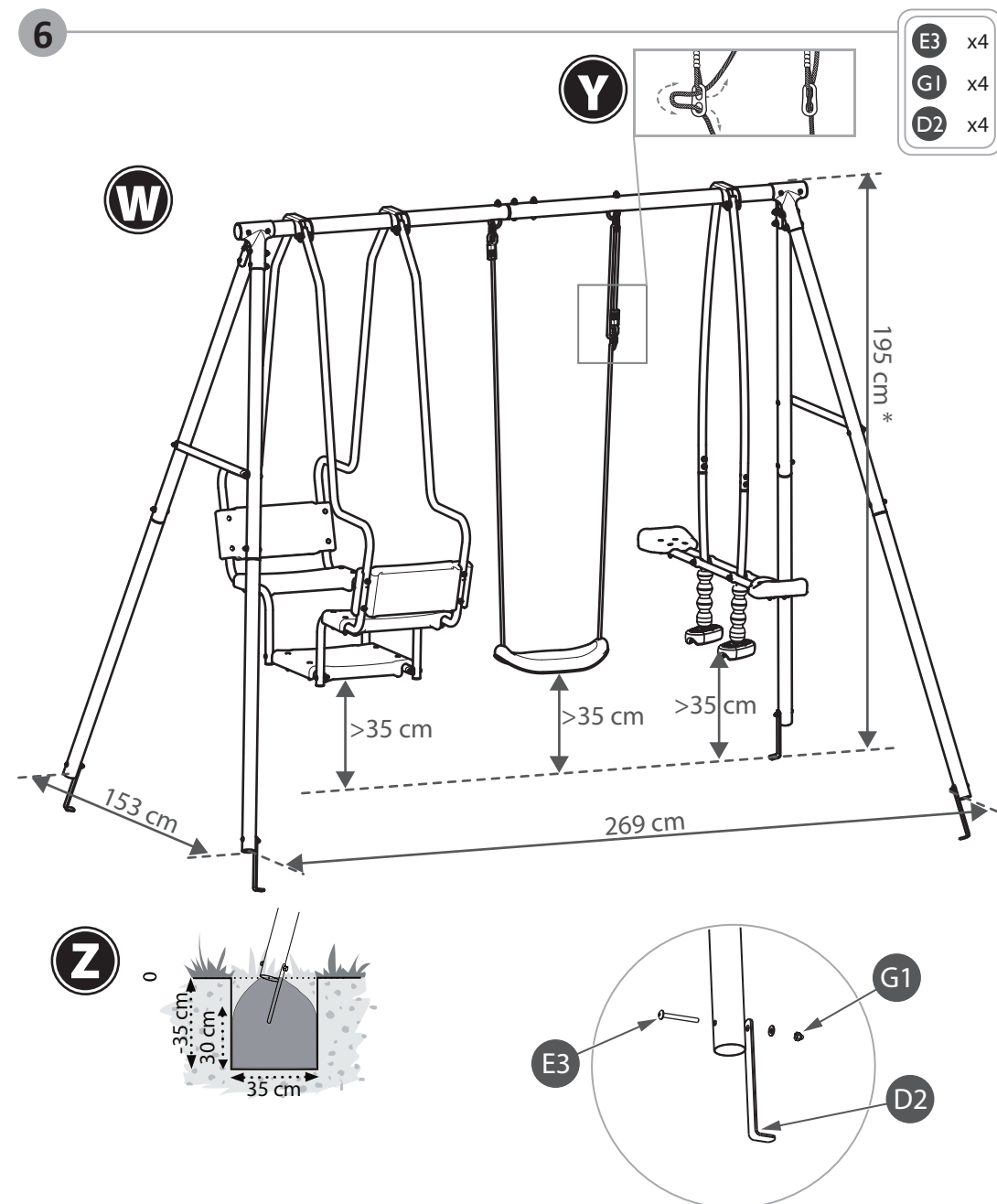
- If the product is equipped with fabrics, they must be cleaned with a damp sponge. Do not use washing products.

- To prevent the product for deteriorations due to weather conditions, remove and store all apparatus and accessories of the product during winter period.

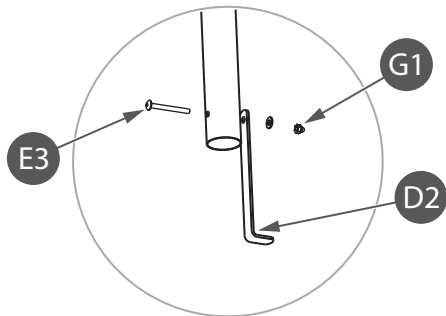
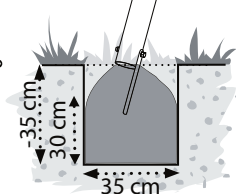
- If corrosion occurs on metallic parts, clean them with a suitable product. If corrosion is still progressing, contact our after sales service.

- Keep a watch on the floor where the product is installed, remove stones and all other object that could hurt users in case of falling.

6



Z



*

(GB) Above dimensions are indicative, they can varied according to the assembly method.

CE